



Title of the solution:	Eduflow	Team name:	Eduflow
Challenge addressed:	Education quality	Challenge category:	Flexible Education
Background of the team: <small>(multiple selections possible in case of mixed teams)</small>	<input type="checkbox"/> Higher Education Students <input type="checkbox"/> Teachers <input type="checkbox"/> Others (please specify) <input type="text"/>	<input checked="" type="checkbox"/> Researchers <input type="checkbox"/> Primary School Students	<input type="checkbox"/> Professionals <input type="checkbox"/> Secondary School Students

Solution description

What is the final product/service/tool/activity you're proposing? What are its main elements, technologies and objectives? Could you please include a brief implementation plan with some key overall milestones, resources required and eventual barriers foreseen?
How could your solution be used to enhance digital education nowadays? How could its success be measured?

EduFlow is a comprehensive hybrid learning platform designed to bridge gaps in education by providing flexible, real-time, and accessible learning experiences. Its core mission is to make education adaptable and inclusive, catering to the diverse needs of students, teachers, and institutions in a rapidly changing educational landscape.

Context

What is the current or future problem you're trying to solve? How does your solution align with DigEdHack 2024 annual theme?
How does your solution address the modern demand for flexible, accessible and real-time education in a landscape where traditional models struggle to keep up with hybrid and personalized learning needs. As technology reshapes education, EduFlow bridges gaps in digital access, engagement, and support, offering an inclusive platform that adapts to diverse learning environments and reaches underserved communities.

Target group

Who is/are the target group/s of your solution and how will they benefit from it? Why is your solution relevant to them? how do you plan to engage these groups so you fully meet their specific needs?

EduFlow's target audience includes educational institutions, corporate training departments, educators, and learners. Clients like schools and businesses need a flexible platform for hybrid learning. Users, including teachers and students, benefit from EduFlow's real-time engagement and personalized learning features. The broader beneficiary is the community, which gains from the platform's focus on accessibility and inclusivity, helping bridge educational gaps and support lifelong learning.

Impact

How will your solution catalyse changes in education and what impacts will it have at social and environmental level? Could you provide examples or scenarios illustrating how such changes and impacts might unfold?

EduFlow's impact is far-reaching, promoting accessible, flexible, and inclusive education. By bridging digital and geographic divides, it empowers institutions to support diverse learning needs and enables educators to provide real-time, personalized guidance. Students benefit from adaptable learning paths that enhance engagement and foster lifelong skills. Ultimately, EduFlow contributes to educational equity, prepares learners for a dynamic future, and strengthens community growth through accessible, high-quality learning opportunities.

Describe it in a tweet

How would you describe your solution in a short catchy way with maximum 280 characters?

EduFlow: A flexible, real-time hybrid learning platform that makes education accessible, personalized, and inclusive for all. Empowering students, educators, and communities to thrive in a connected world. #EduTech #HybridLearning #InclusiveEducation

Innovativeness

What makes your solution different and original? Are there similar solutions or approaches currently available or implemented by education sector practitioners? If so, why and to what extent is your solution better?
EduFlow's innovation combines real-time engagement, flexible learning modes, and AI-driven personalization in one platform. It supports diverse needs across in-person, online, and hybrid settings, making quality education accessible and inclusive for all students, regardless of background.

Transferability

Can your solution partly or fully be used in other education/learning contexts or environments? Could it be implemented in other regions?
EduFlow is highly transferable, adaptable across various educational settings—from K-12 and higher education to corporate training. Its flexible structure and customizable features make it easy for institutions of all types to implement, regardless of size, location, or learning model.

Sustainability

Once you have a prototype, what are your plans for a further development, implementation upscale and replication of the solution? How do you see it working in the mid- and long term?
EduFlow's sustainability stems from its scalable licensing model, low operating costs, and adaptability across diverse educational environments. By meeting the evolving demands of hybrid learning, it ensures long-term relevance and financial viability while promoting inclusive, quality education for all.

Team work

Present the members of your team. Why are you the perfect team to develop this work and what are the competencies you all bring in so the solution is developed successfully? What is your expertise within the thematic field concerned? Are you planning to continue working as a team in the future? If so, why?

Rafael Alejandro Vidal Rodríguez
PhD Researcher



EduFlow

Where Learning Moves Freely

Revolutionizing Education with Real-Time Hybrid Learning

MBA Rafael Vidal

67% of students favor hybrid models.

Hybrid models have demonstrated a **10%** higher graduation rate.

77% of students prefer hybrid courses that include asynchronous components.

82% of faculty members say they plan to continue using hybrid teaching tools

Wicked Problem

“How might we co-create human flourishing through education with emerging technology?”

Trends

Social

Student demand for flexible and convenient learning modalities is increasing.

The focus on equitable and inclusive teaching and learning has expanded and intensified.

Microcredentials programs are gaining momentum and maturity.

Technological

The potential for AI to become mainstream is growing.

The online versus face-to-face dichotomy is being disrupted.

Low- and no-code technologies that simplify complex processes are enabling more people to create digital content.

Political

Governments are leveraging disinformation and propaganda.

Nationalism is rising across the world.

Political party conflict is increasingly blocking decision-making and action in the U.S. political system.

Economic

Affordability and ROI are impacting potential students' decisions to enroll in postsecondary education.

As funding for public higher education declines, institutions are expected to do more with less.

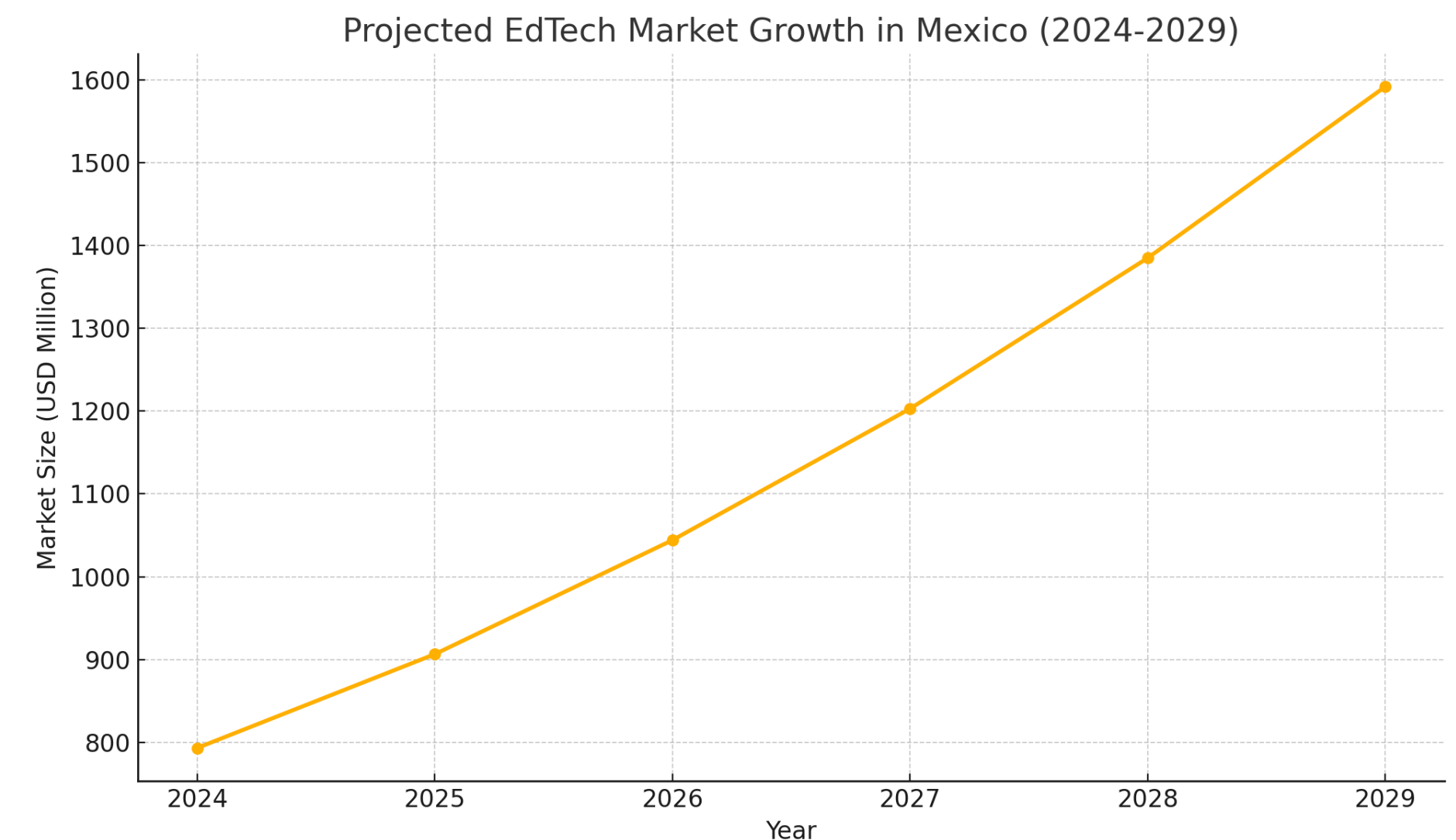
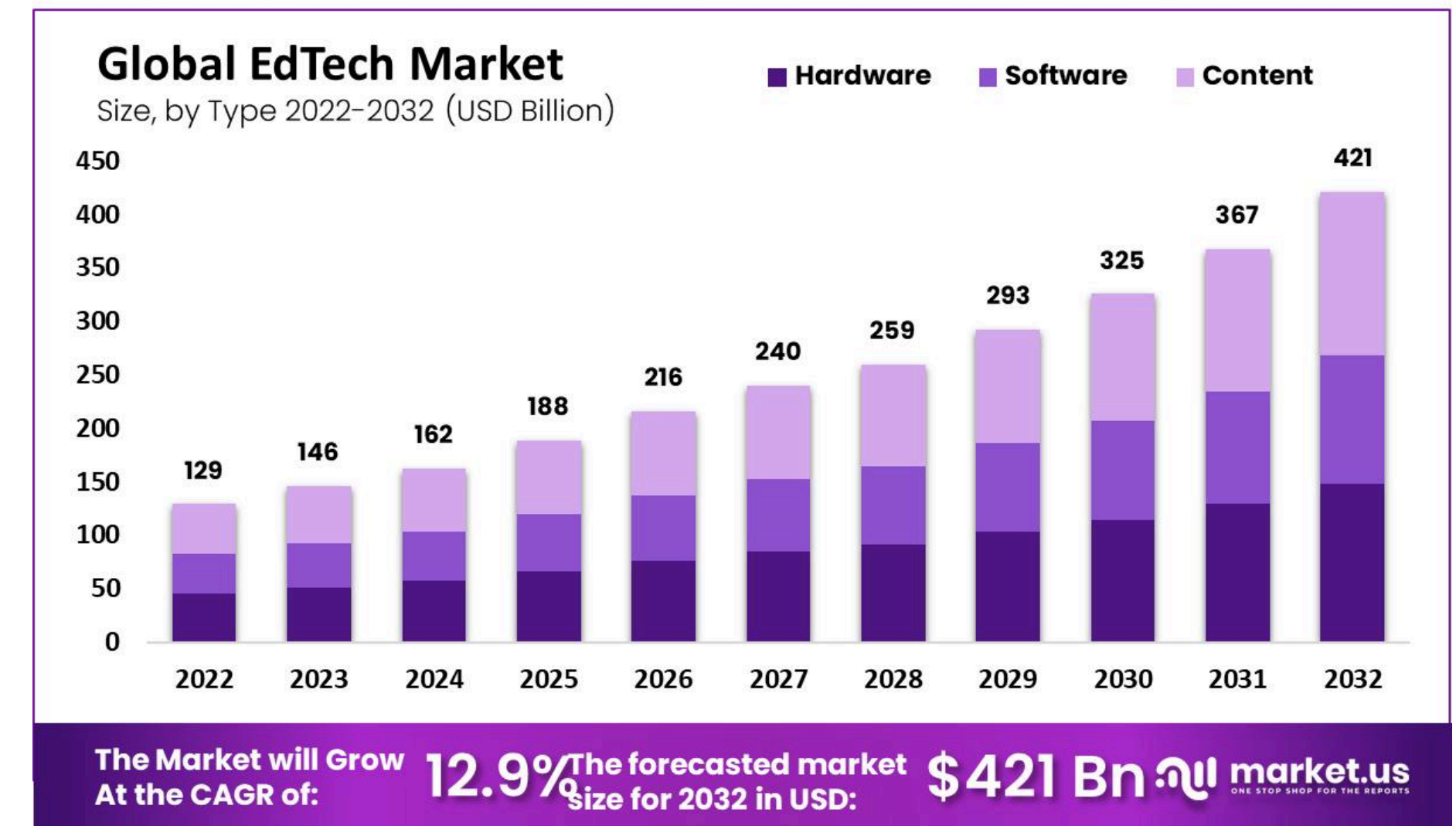
The need and demand for lifelong, workplace learning are increasing.

Environmental

Climate change is increasingly impacting our daily lives.

Environmental issues are being integrated into academic programs and institutional operations.

Technology is behind the curve on reducing its environmental impact.

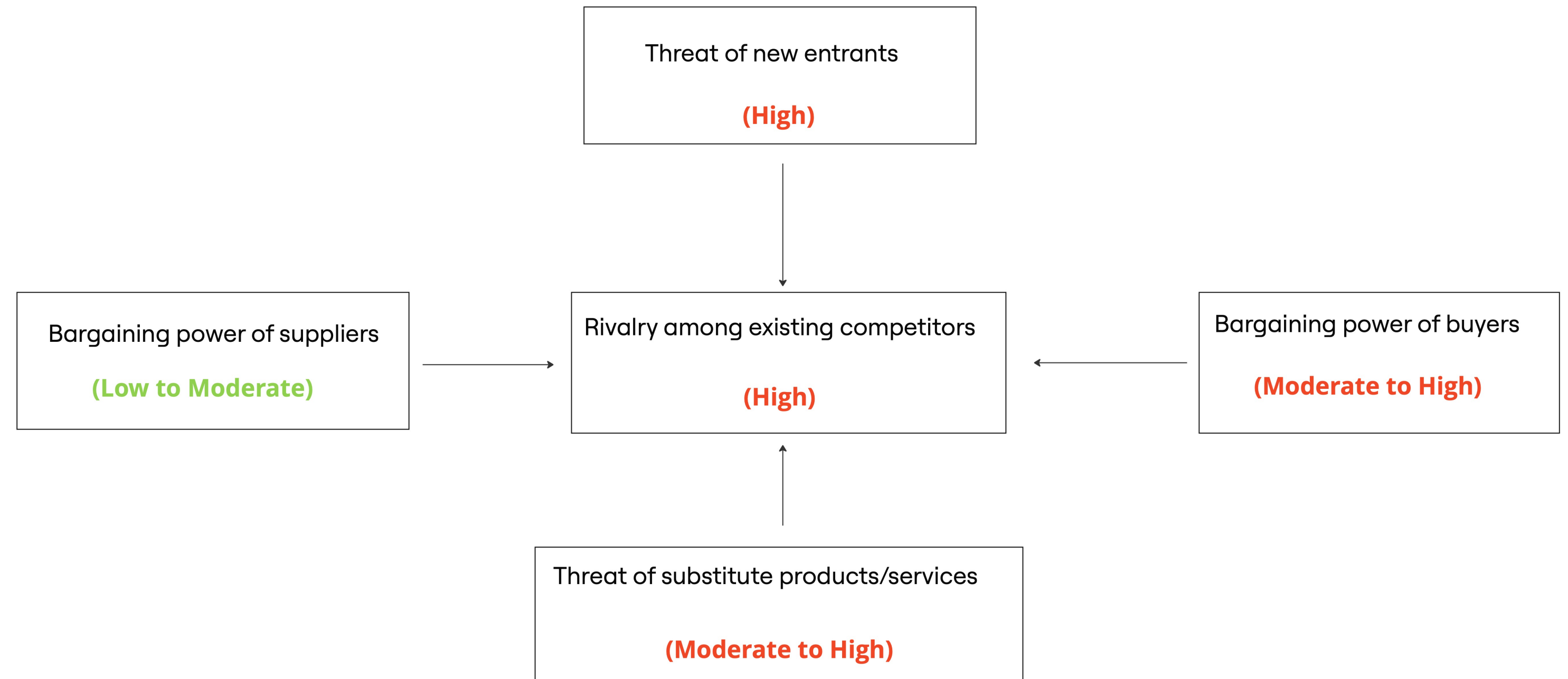


(Euromonitor, 2024)

Competition

Main competitors:

- Google Classroom 30% MS
- Microsoft Teams 20% MS
- Nearpod 15% MS
- Kahoot! 10% MS
- Class Dojo 10% MS
- Padlet 10% MS



Future Scenarios



High institutional agility

Low institutional agility

High technology adoption

Low technology adoption

Transformation 20-30% probability	Growth 40-50% probability
Collapse 10-30% probability	Constraint 20-30% probability





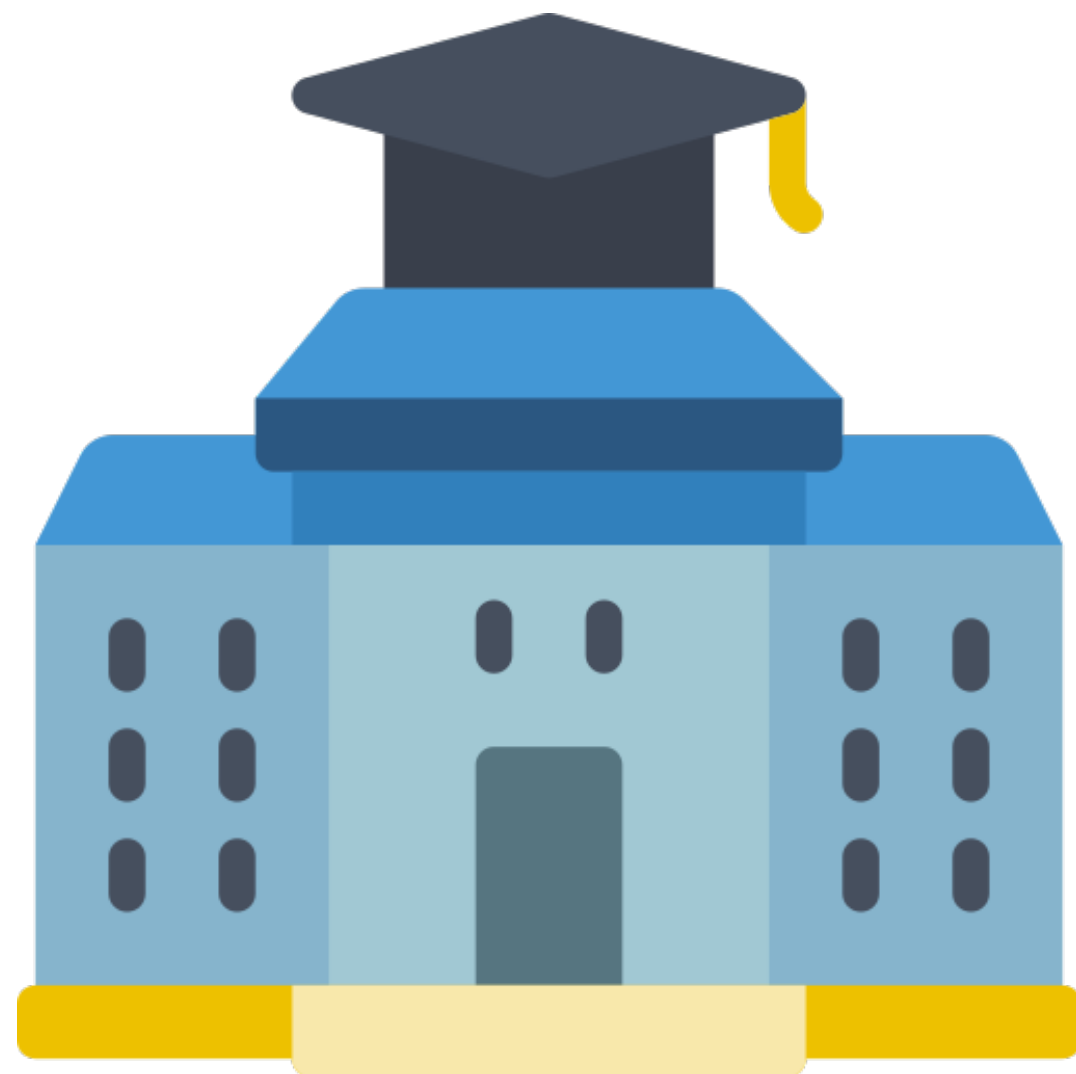
EDUFLOW

WHERE LEARNING
MOVES FREELY

Target Market

Client

Universities



User

Teachers and Students



Beneficiaries

Community

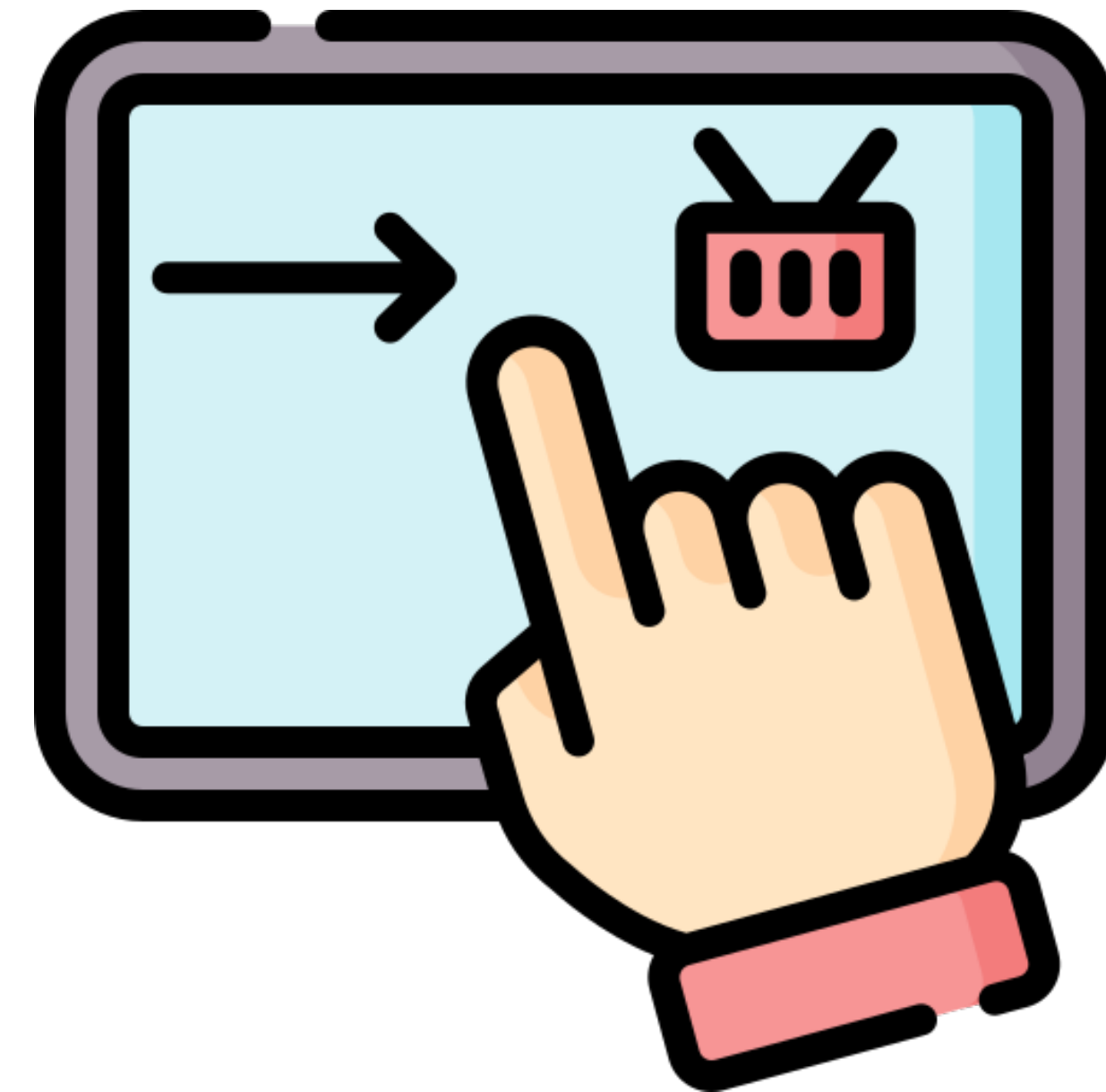


Key Features

- Hybrid and Flexible Learning Support.
- Real-Time Feedback and Tracking.
- Adaptive Learning Paths and Data-Driven Insights
- User-Friendly Interface
- Gamification
- Seamless Integration

Mockups:

- Student view: <https://withastroastroztcqyz-oyse--4321--f565b097.local-corp.webcontainer.io/>
- Teacher view: Pending



Benefits and Shared Value Creation

- Reconceive products and markets.
- Productivity in Value Chain.
- Local Clusters.

Human Flourishing: Personalization, real-time feedback and support, autonomy, purposefully learning (meaning).

Licensing Business Model

Assumptions for Licensing Model

- Licensing Fee per Students: \$10 annually
- Number of Initial Institutions (Year 1): 20
- Annual Growth Rate: 30% (assumes rapid expansion as EduFlow gains market traction)
- Operating Costs (annual): Estimated at \$200,000 (for development, support, and maintenance)
- Profit Margin Goal: 60% after covering costs

Total Revenue: \$200,000 + \$260,000 + \$340,000 = \$800,000 USD

Total Profit: \$50,000 + \$110,000 + \$190,000 = \$350,000 USD

Return on Investment (ROI): Assuming initial development cost of \$200,000, ROI = Total Profit / Initial Cost

$$\text{ROI} = \$350,000 / \$200,000 = 175\%$$

**Lines among face -to-face, online, hybrid,
(etc.), education is disappearing.**

**“Join us on the journey to redefine
education - because every student
deserves a learning experience that flows
freely”.**

Hybrid Learning Flow Monitor

Study Session Timer

00:00:00

Start

Pause

Reset

Achievements



Quick Learner

Complete 5 modules in a week

100%



Team Player

Participate in 3 group sessions

66%



Focus Master

Study for 20 hours total

40%

Online Learning Progress

65%

In-Person Sessions

40%

Assignments Completed

80%

Overall Progress

70%

Recent Activity



Completed Module 1

2 hours ago



Earned 'Quick Learner' Badge

5 hours ago



Attended Virtual Class

Yesterday

Your Learning Path

online

100%

Introduction to Programming

hybrid

65%

Data Structures

in-person

0%

Algorithms

Total Study Hours

24.5

Sessions This Week

12

Focus Score

8.5

Engagement Rate

92%