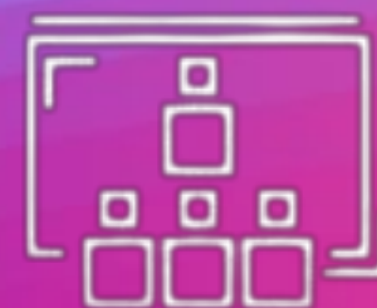




Education Without
Barriers



ALIRA



European
Commission

Tim "ISTEKOVCI":
Đurđina Filipović
Aleksa Višnjić
Aleksandar Butulija

00 Table of contents

This is ALIRA



1 Identifying the Problem

2 Solution and Key Features

3 Practical Implementation

4 Impact on Teachers

5 Target Market and Vision

6 Conclusion & Future Steps

01 - Identifying the problem

01 Identifying the problem

Why ALIRA?



Problems we address:

- Students with disabilities are frequently unable to capture complete notes, follow fast-paced discussions, or engage fully in real-time
- Teachers struggle to provide individualized attention to students who need it most, as class sizes and curriculum demands increase
- Students often refrain from asking questions due to fear of embarrassment or time constraints, which impacts their understanding and confidence



01 Meeting the Needs of Every Student



Classrooms today are more diverse than ever, with students who require different types of support to fully engage in learning.

We provide support for students with **motor, visual, cognitive, or neurological challenges**



02 - Solution and Key

Features

02 ALIRA

Education without barriers



Our Mission

To break down barriers in education,
enabling of all abilities to reach their full
potential

Our Vision

A world where every student, regardless
of learning challenges, has the tools and
support needed to succeed academically
and personally

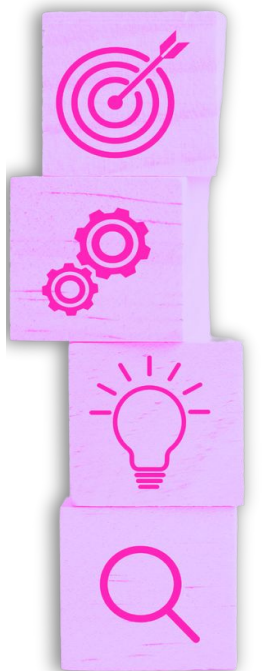
02 Practical implementation

Education without barriers



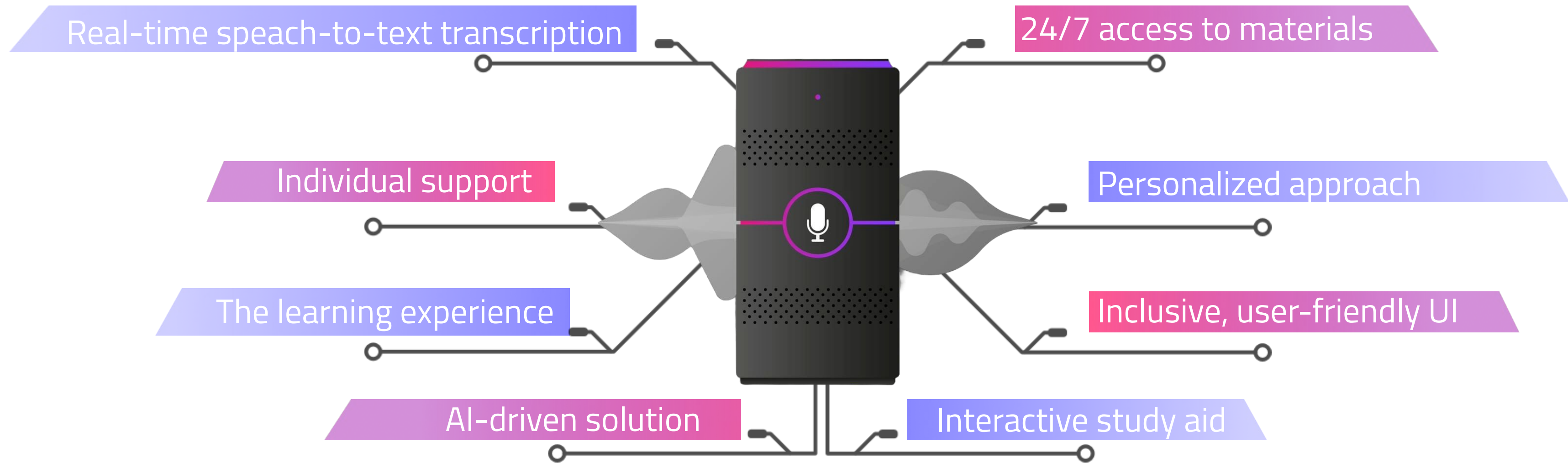
A dedicated classroom device that monitors the class in real-time.

- Positioned on the teacher's desk, capturing and analyzing class content
- Mobile app for students, connected to the classroom device for continuous access
- Enables students and teachers to interact seamlessly with the assistant



02 Key Features

Education without barriers



03 - Practical implementation

The full **prototype** of our application can be found [here](#).

Main page

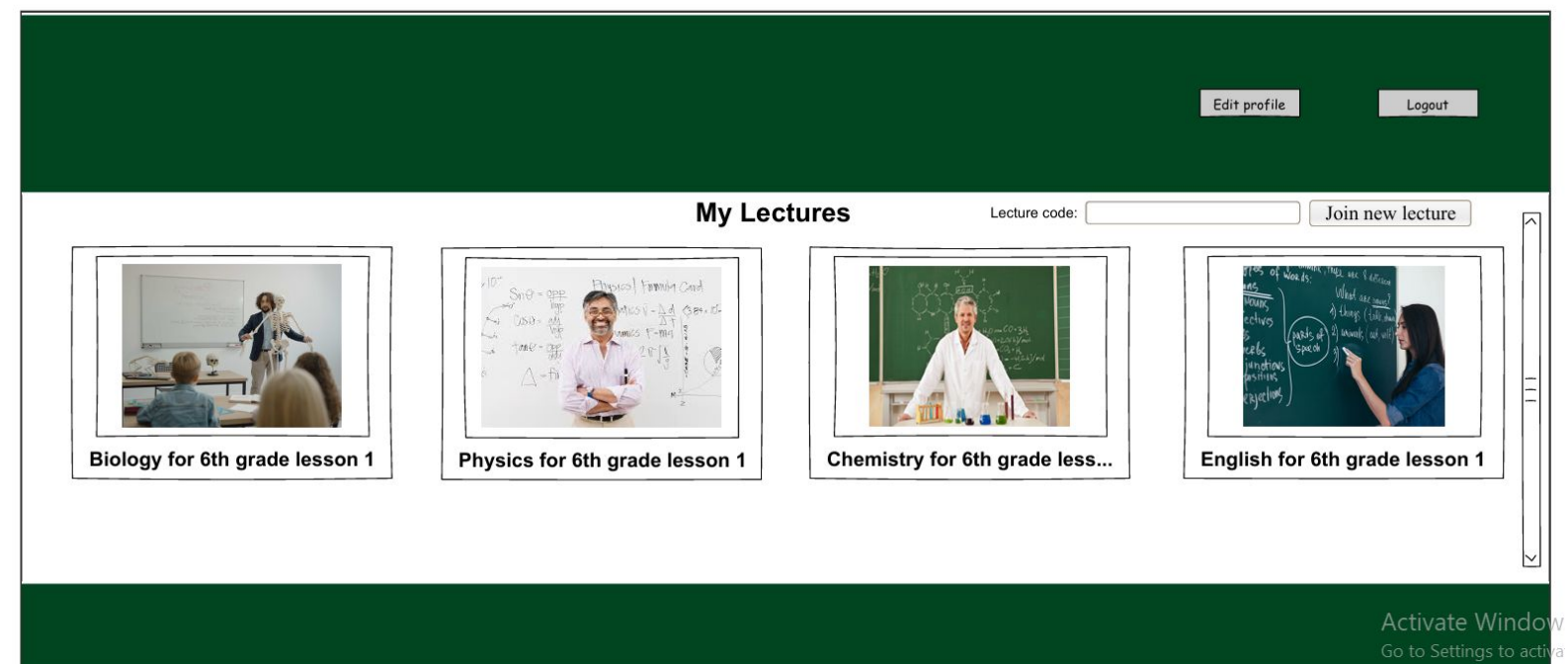


Activate Windows

Login page

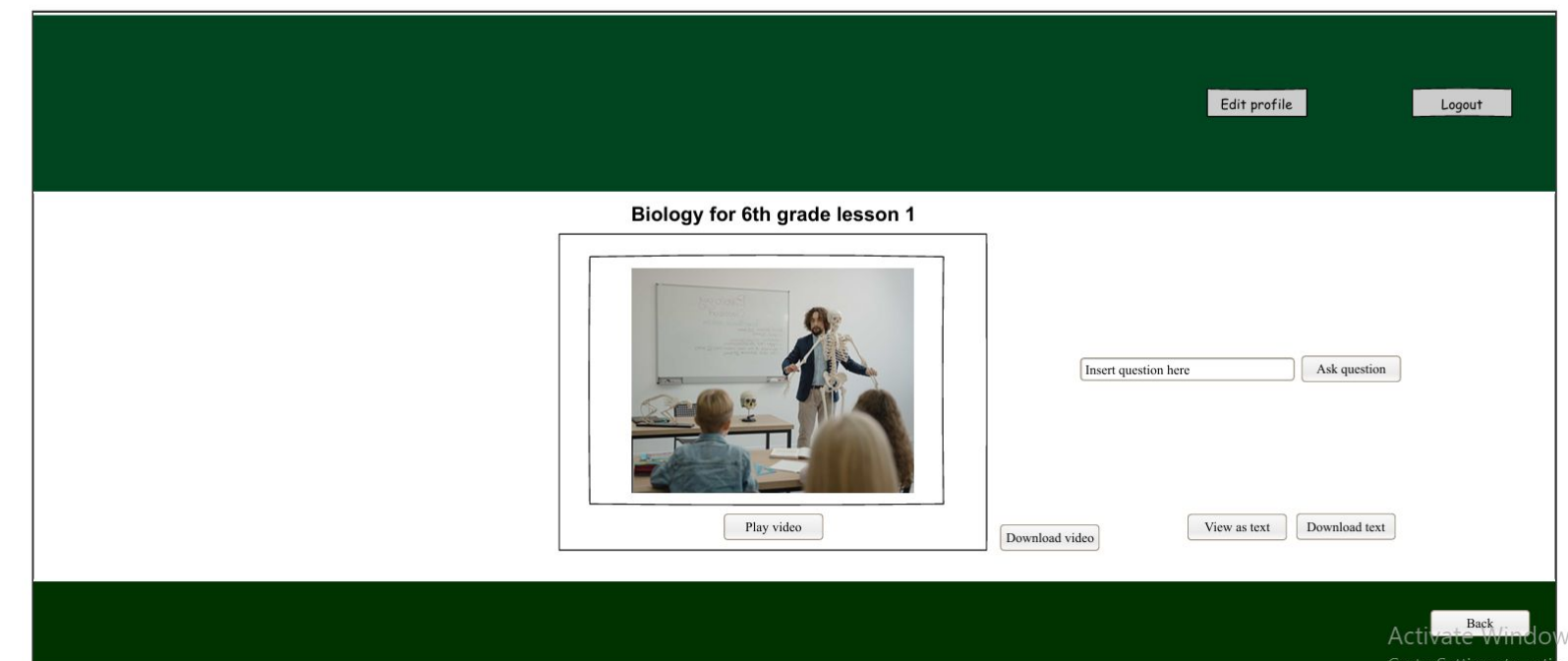


Registered student



Activate Windows
Go to Settings to activate Windows.

Student - Course



Activate Windows
Go to Settings to activate Windows.

04 - Impact on teachers

04 Teacher mode

Education without barriers



ALIRA assists teachers by providing a deeper understanding of student needs and learning challenges.

- Insights into commonly asked questions and confusion areas
- Opportunity to create personalized learning strategies
- Administrative support, such as attendance tracking and progress analysis

04 SWOT Analysis

<p>Strengths:</p> <ul style="list-style-type: none">• Unique product• No direct competitors• High impact for students with disabilities• Expandable features	<p>Weaknesses:</p> <ul style="list-style-type: none">• No benchmarks• Lengthy development• Risk of similar solutions emerging
<p>Opportunities:</p> <ul style="list-style-type: none">• Strong demand in education• Partnership potential• Funding for growth	<p>Threats:</p> <ul style="list-style-type: none">• Risk of replication by larger companies• Potential late market entry• Increased competition

05 - Target Market and Vision

05 Target market

Education without barriers



ALIRA is ideal for schools supporting students with special needs and for well-resourced schools seeking the latest in educational technology.

- Schools serving students with diverse learning needs
- High-budget schools investing in advanced educational technology
- Vision for global adoption across educational institutions



06 - Conclusion and Future

Steps

06 Conclusion

Education without barriers



ALIRA is more than an assistant – it's a bridge to student success in learning

- Transforming classrooms into inclusive environments
- Empowering students to become more independent learners

Call to action: Invest in the future of education
with ALIRA



06 Future Steps

Education without barriers



Voice Recognition: Enable personalized assistance through individual voice recognition.

Tech Integration: Connect ALIRA with smart boards and classroom tech for interactive learning.

Language Expansion: Add multi-language support to broaden ALIRA's accessibility.

Accessibility Features: Incorporate options for sensory and cognitive inclusivity.

Global Reach: Expand ALIRA to classrooms worldwide, promoting inclusive education.



Thank you for your attention!



European
Commission