

# PATHFINDER

Discover your direction



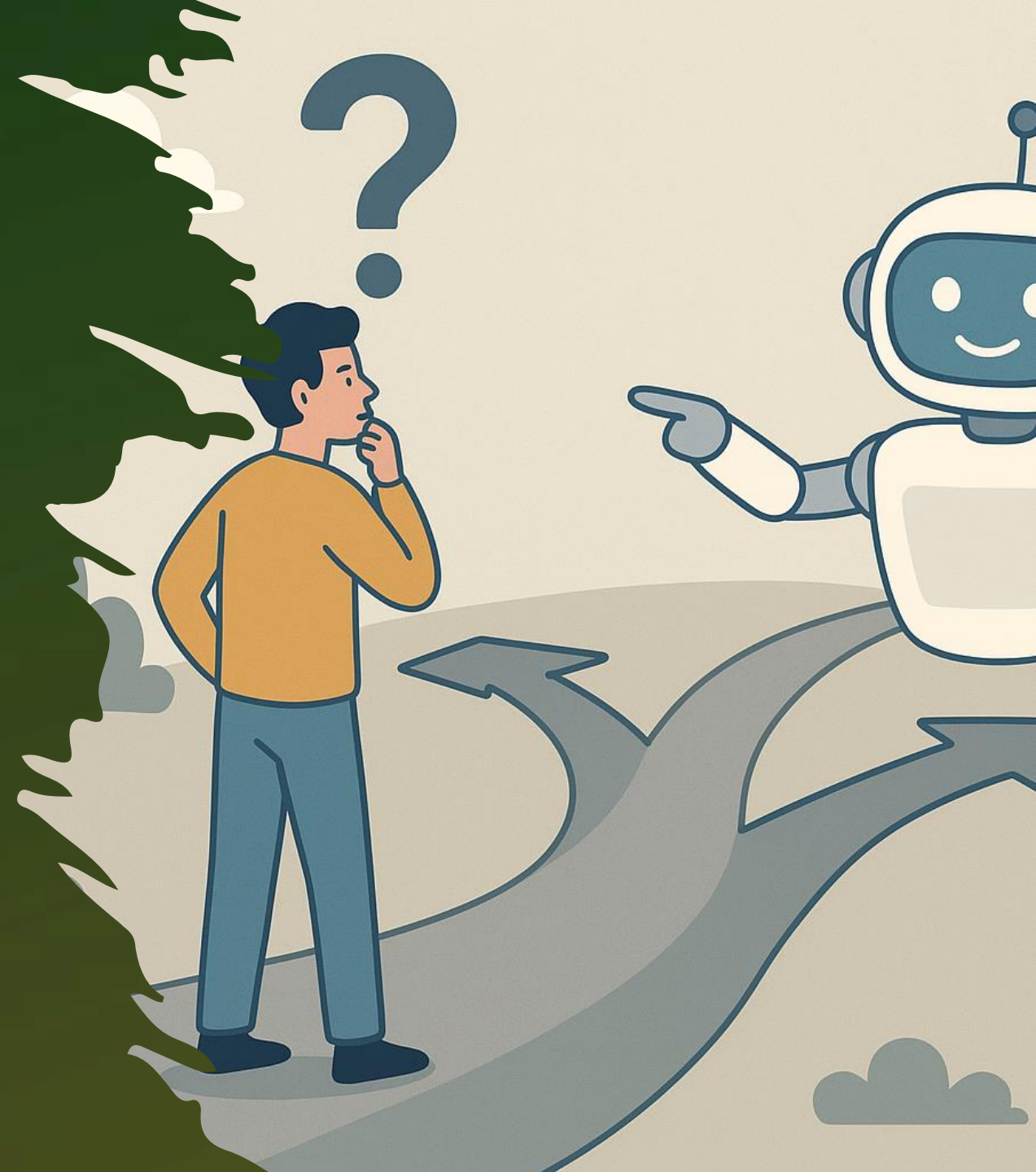
Istituto di Istruzione Secondaria Superiore  
**Salvatore Trinchese**

Via prolung. piazza Gramsci - 73025 MARTANO (LE) - Tel. e Fax: 0836 575455




# CONTEXT

- We try to resolve the problem of uncertainty in undertaking a study or work path to avoid future complications. This happens thanks to the use of this AI that, based on the characteristics and preferences of the individual, guides the person towards the right way. All this can help our generations and future ones to understand and try to undertake the one that reflects one's preferences



# INTERFACE



pathfAnder

What do you attend?

Middle school

High school

University

Job

What will you attend?

High school

University

Subjects that you are studying

Maths

English

Philosophy

+

+

+

9

+

+

+

+

+

Mean

...

9

# TARGET GROUP

- Our project is oriented to an audience that goes from 10/11 years old to until it's needed without age limits for older people, it's oriented to all kinds of people, even those with disabilities or learning disorders (DSA/BES). Individuals who will use this platform will be able to make school and/or work choices without future regrets.



# IMPACT

- Our idea will help the person to choose the path to take without needing long research to find the path that most reflects their preferences.
- Example: a student is 19, he have just graduated and he is searching for a university that suits his interests. Using this app, through the insertion of personal school data, he can identify the perfect facolty for him.





# INNOVATIVENESS

PathfAInder stands for its efficient search capability, thanks to the use of information and specific filters. Other AIs do their job by providing non specific and non extensive list, while pathfAInder offers a set of results based on precise indications given by the user, to maximise the effectiveness of the reserch and reduce the waste of time.

# TRANSFERABILITY

PathfAInder can also be used by teachers to help their students with orientation: for example during the third year of middle school they can indicate which path would be the best for them to take, to help them build an excellent study path.

# SUSTAINABILITY

After getting a prototype, we intend to improve it in parallel with the developpement of the AI in general, to make it faster and more effective. In our opinion as the years go by the use of pathfAInder will only increase, since orentation is important both for education and for work.

# TEAM WORK



FEDERICO  
ANTONIO  
GARRAPA

Presentation  
creator and  
passionate about  
technology.



VIRGINIA  
PROTOPAPA

Logo creator and  
passionate about  
foreign languages.



ILARIA MAZZEI

Translator and  
passionate about  
foreign languages.



ALESSANDRO  
PETRUZZI

Group's  
spokeperson and  
passionate about  
science.



MATTEO  
GALIOTTA

Interface creator  
and passionate  
about informatics.



THANKS FOR THE ATTENTION