



12.11.2025

Doors OS

An operating system designed for people with disabilities

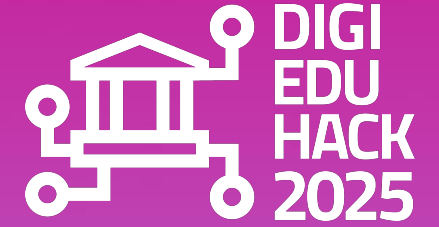
Vuk Jovanovic
Stefan Turudic
Bogdan Bogic



DigiEduHack is an initiative under the Digital Education Action Plan (2021-2027) of the European Commission



Content



- 01 – What is Doors OS**
- 02 – Features of Doors OS**
- 03 – What Doors OS Is Used For**
- 04 – In Short**

1.What is Doors OS



- Doors OS is an operating system originally designed to help people with a wide range of special needs.
- Our vision is for it to be similar to other operating systems (Windows, Linux), but with a large number of additional settings that support users with diverse accessibility needs.
- The goal of Doors OS is to provide every user—regardless of physical, mental, or cognitive abilities—with simple and efficient access to the digital environment.
- Unlike existing systems, Doors OS offers integrated accessibility tools that are built into the very core of the system, rather than added as optional features.

Features of Doors OS



System Customization

The system comes in three versions:

Standard: A typical operating system where all settings and options are available. It is very similar to existing OS solutions (with built-in accessibility features, of course).

Simplified: A more streamlined interface and menu with fewer unnecessary functions, allowing faster and more intuitive use. Intended for users with learning difficulties and/or those with less computer experience.

Minimum: The simplest form of the OS, featuring an extremely easy-to-use interface/menu, almost all non-essential functions removed, larger text/icons, and high clarity. Designed for users with significant learning difficulties, elderly users, or those with impaired vision, etc.

AI Asistent

Doors OS comes with an integrated AI assistant that:

- Provides simpler and shorter answers depending on the user's request
- Can modify computer settings upon the user's command
- Can access the internet for the user, open/close windows, and perform actions in the browser
- Includes a built-in accent/stutter detection system and other speech-related support tools
- Scans the screen to help the user navigate the computer or the internet
- Adapts over time to the user's needs

Accessible Features

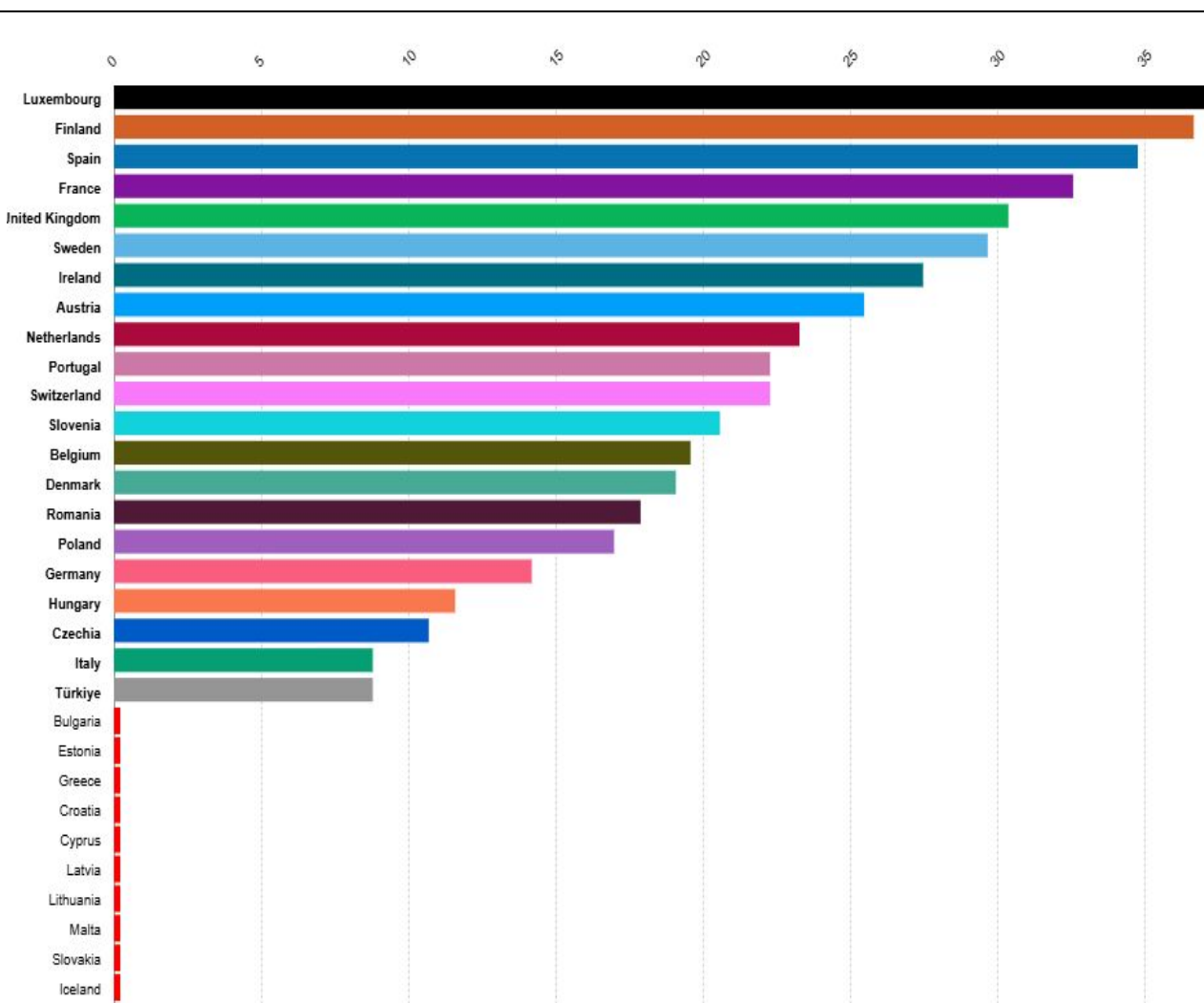
1.Adaptive Interface -(available through different system versions)

2.Support functions for users with cognitive difficulties - (such as dyslexia, learning disabilities, attention deficits, etc.) These include simplified language, progressive feature reveal, and contextual assistance built directly into the OS through the AI assistant.

3.Multimodal input/output and cross-modal switching - While many operating systems offer voice control or screen readers, very few allow fast switching between modes based on the user's needs. Doors OS also supports multiple assistive modules running simultaneously.

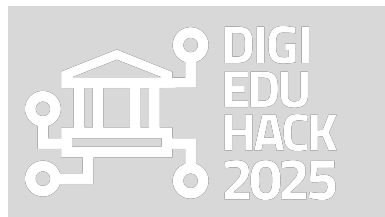


What is Doors OS used for?



- People with disabilities generally experience poorer health, lower educational achievement, fewer economic opportunities, and higher rates of poverty compared to people without disabilities.
- This is mostly due to the lack of accessible services and the many barriers they face in everyday life.
- Doors OS is designed to help reduce these challenges by making learning and the use of computers and the internet easier for these individuals, thereby improving their daily lives at least to some extent.

In short



Doors OS is an operating system designed to:

- increase digital literacy among people with disabilities,
- make information more accessible to users with disabilities,
- reduce the difficulties they face when using a computer.



THANK YOU FOR YOUR ATTENTION!!!!

