

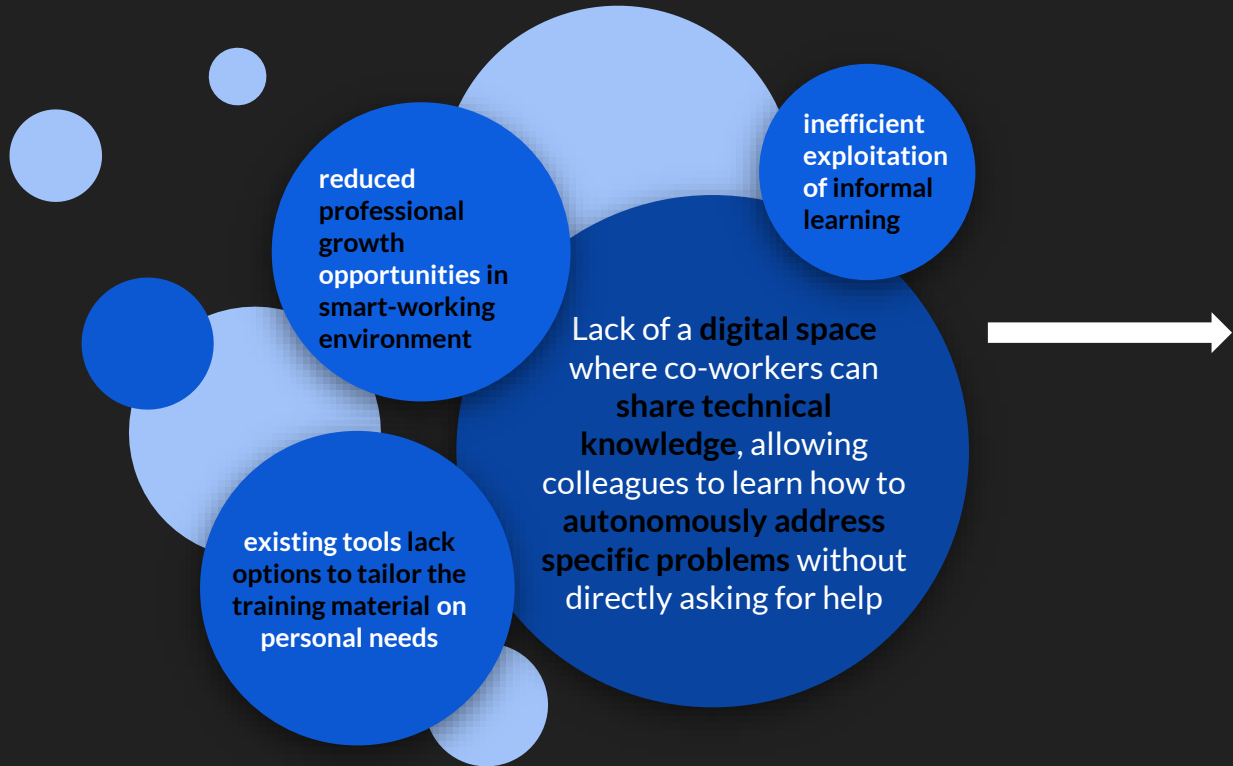
Digital  
Boarding  
Organizator  
for Dynamic  
Learning

The logo for DeLeBo is centered within a large black circle. The text 'DeLeBo' is rendered in a sans-serif font, with 'De' in blue, 'Le' in grey, and 'Bo' in blue.

DEveloper LEarning Bot

The new artificial intelligence system for junior IT employees  
training in corporate companies

# WHY - The Problem



## GOALS

Home-boarding people joining the company

Targeted + topic-oriented training

Facilitate socialisation + informal learning

## FOCUS

- Cost-cutting
- Efficiency improvement
- Simplification
- Resources optimisation

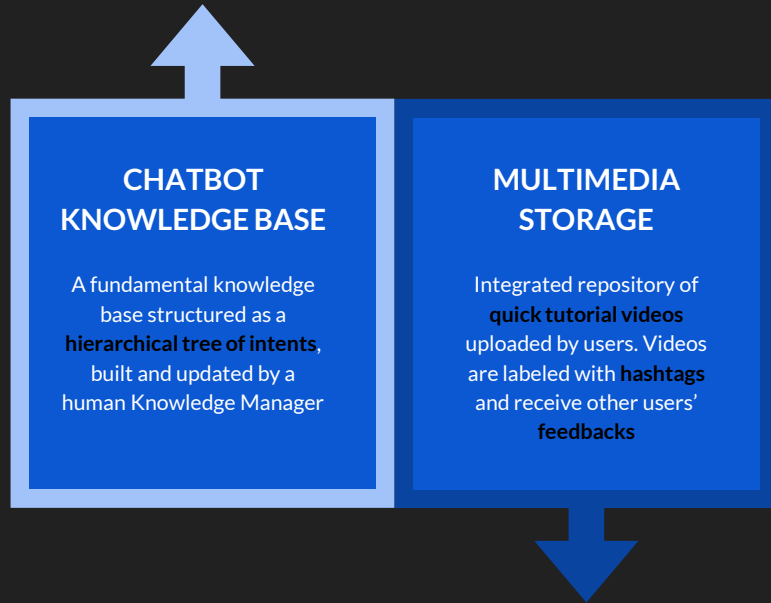
# WHEN - Contextualisation

DeLeBo aims to integrate **social interactions** and **cooperation** in the **remote working era**

- Corporate companies dislocation
- Workspace evolution
- Health emergency



# WHAT - The Solution

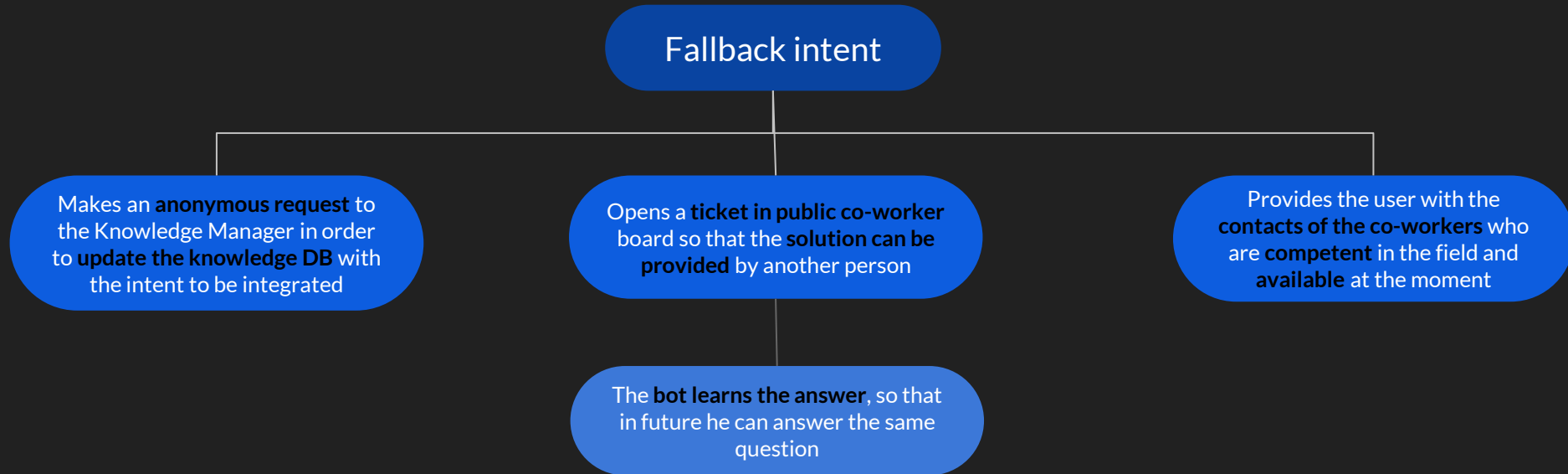


DeLeBo is an **integrated chatbot** operating through **speech-recognition** tasks

It was specifically developed for the **programming domain** and simulates **one-to-one informal conversations**

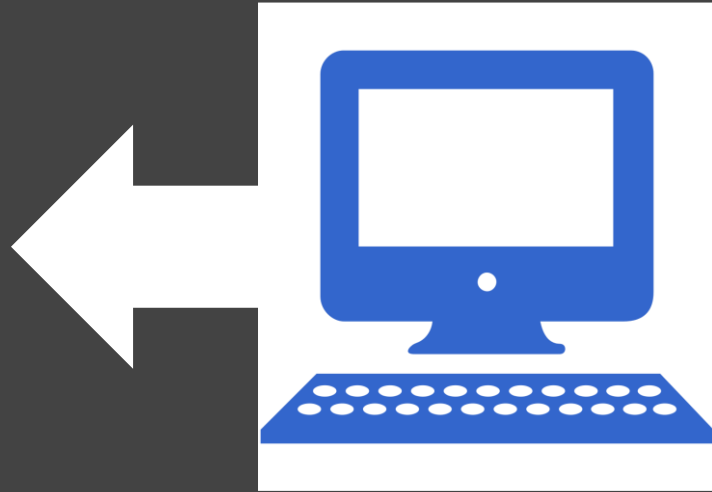
# WHAT - The Solution

It handles **fallback intents** with a **double procedure**



# WHERE - The platform

DeLeBo is available through a **webapp** for internal use only, integrated with a **multimedia storage**, whose contents are updated by users, in a **social-network fashion**



# WHO - The team and the target



The project aims to quickly improve professional skills of junior IT programmers employed by corporate companies in remote working modality, especially in the first phases of their training

## BY WHOM



### Professional team

- UUX designers
- NLP experts
- Programmers
- HR
- Mediators
- Conversation designers
- Knowledge managers (semantic technology experts)

## TO WHOM

### Target Group characteristics

- high turnover rate (high training cost)
- young adults (generation Y - Z)
- busy, with little free time
- ambitious
- willing to socialise with colleagues

# WHO - Persona



**Hi, I'm Lucy!**

I'm a **25 years** old freshly graduated **Software Engineer!**

I just got a **full-time job** at an IT company and I need to **get into my work context**, following a training program which is suitable for me.

Unfortunately, I **don't have much time for studying** now, so I really need to focus only on **specific tasks** I actually need in my working days.

I'd also like to **keep in touch with my co-workers**, sharing our expertise in order to improve each other's **skills**, but also to make **friends**.

REPRESENTING THE TARGET AUDIENCE



## EXTENSION OF FUNCTIONALITIES

- Integrated MMDB of contents uploaded by users
- Hierarchical knowledge base constantly updated

## MACHINE LEARNING

- Ongoing improvement

# HOW

## OPTIMAL TECHNICAL INFRASTRUCTURE

- Based on Cortana and extended with custom-business logic
- Easily reusable frame

## HUMAN-CENTERED APPROACH

- UUX Design
- Small talks tailored on users
- Feedback-sensitive
- Smart fallback intent management

# HOW MUCH- Business Model

Corporate Companies (IT companies in a first phase, then companies employing mainly temporary or seasonal professionals)

**BUYERS**  
Corporate  
Companies

**Who is  
DeLeBo  
for?**

**USERS**  
IT  
Employees

We aim at establishing ties between young and senior professionals, providing them with a modern and challenging learning environment.

1. Day-by-day **platform improvement**
2. Development granted both by **human interaction + knowledge management and AI learning skills**
3. A **digital space** for co-worker interaction and **personal/professional growth**

**WHY ARE WE SPECIAL?**

# HOW MUCH- Business Model

## FREE PLAN

**Up to 5 users**

Personal bot for dynamic learning inside the company

## PRO PLAN

**For more than 5 users**

Access to information resources outside the company

## ENTERPRISE PLAN

Controls and support for your company

Advanced security

Each one of the non-free plans can be tested in a **free trial period of 1 month**

# DeLeBo - What's next



REPLICABLE and  
TRANSFERABLE

Easy-to-reuse general framework,  
exploitable in other training systems based  
on different target groups



INTEGRABLE

Possible further integrations with work  
management platforms such as JIRA



DeLeBo

team

Seda Cenkayoglu  
Ilaria Laurenza  
Alessia Manera  
Arianna Moretti  
Daniel Zarzecki